



FOR LEASE - 905 CENTRAL AVE

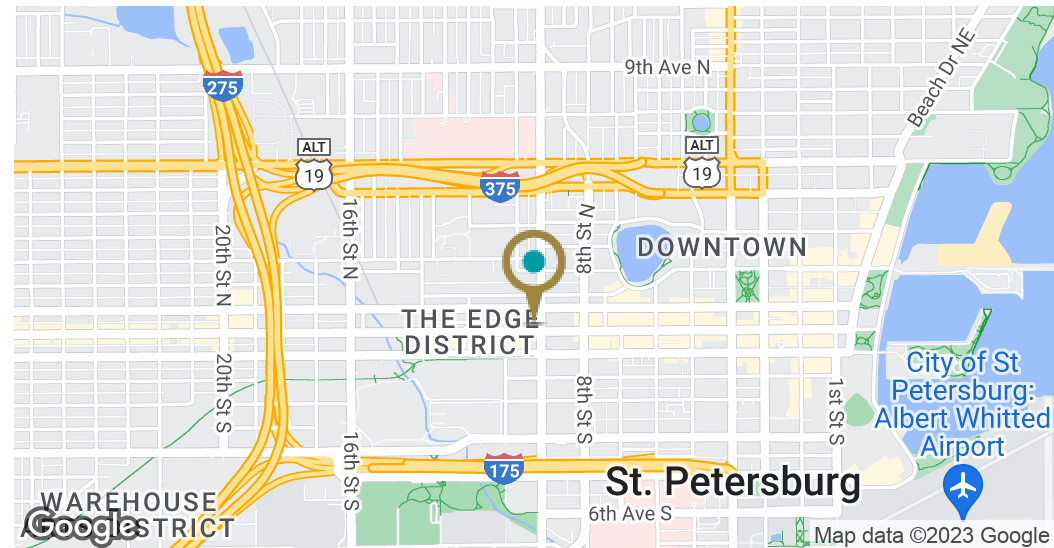
905 Central Ave, Saint Petersburg, FL 33705

EJ Barkett / 727.388.9500 / ej@barkettrealty.com / barkettrealty.com

John Barkett / 727.388.9500 / john@barkettrealty.com / barkettrealty.com



Executive Summary 905 Central Ave, Saint Petersburg, FL 33705



OFFERING SUMMARY

Lease Rate:	Negotiable
Building Size:	5,287 SF
Available SF:	Fully Leased
Lot Size:	5,620 SF
Year Built:	1925
Zoning:	DC-1
Market:	Downtown
Submarket:	Edge District

PROPERTY OVERVIEW

Perfect opportunity for your concept to be in the heart of all the downtown St. Pete action. This retail space, presently built out as a salon, is perfectly located in the Edge District across the street from 930 Central Flats and less than a half a block from the new ICON Central luxury apartment buildings. It is 638 sf with 12 ft ceilings with a painted concrete floor.

The Edge District has enjoyed tremendous growth in the past 5 years and is the home of many local shops, eateries, bars, coffee shops as well as being just a half a mile to Tropicana Field and its 86 acre future redevelopment site. Get in now as the district continues to grow.

PROPERTY HIGHLIGHTS

- Edge District Retail - One of the fastest growing districts in St. Pete
- Close to 930 Central Flats & ICON Central
- 2000+ luxury apartment units within a mile
- Half mile from Tropicana Field



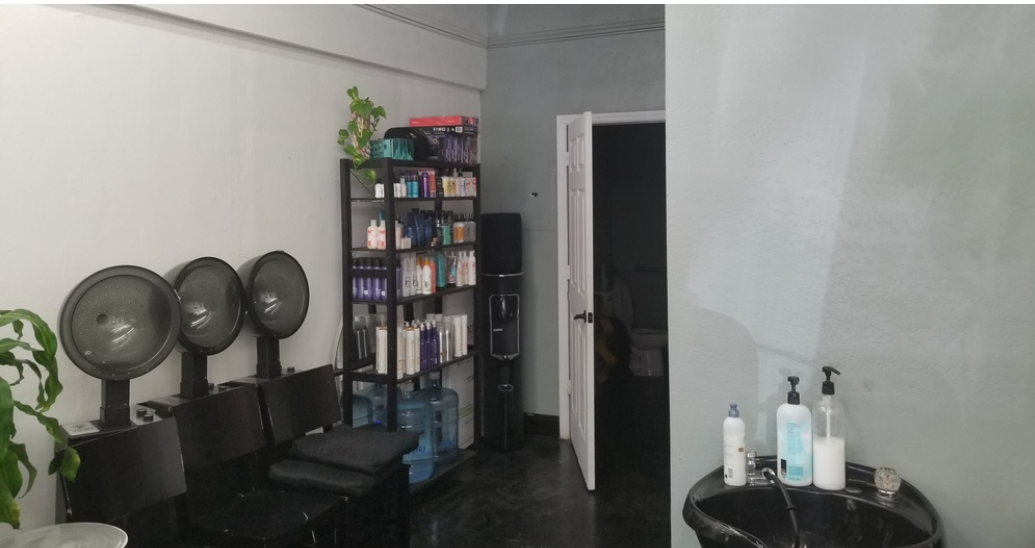
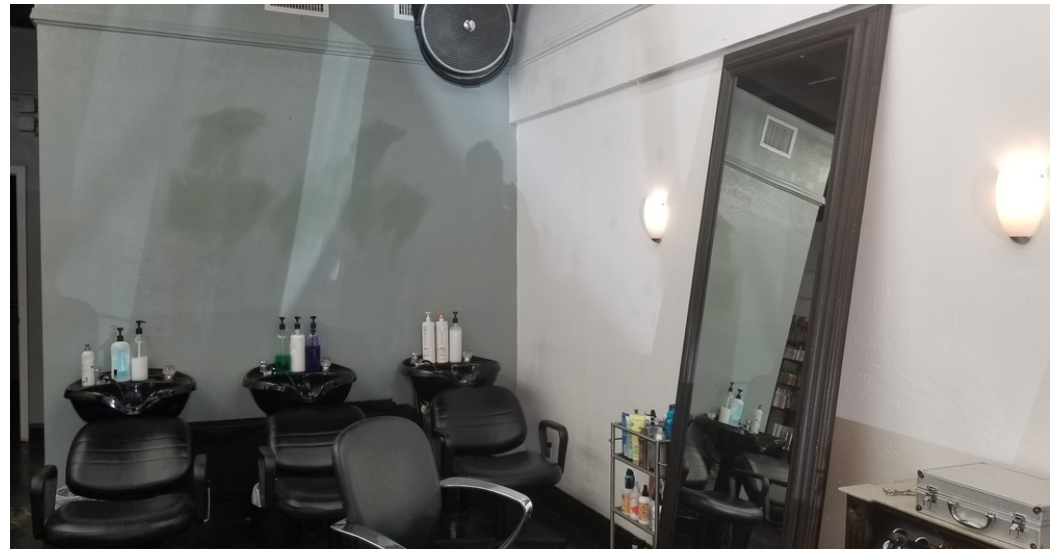
EJ Barkett / 727.388.9500 / ej@barkettrealty.com / barkettrealty.com
John Barkett / 727.388.9500 / john@barkettrealty.com / barkettrealty.com
615 9th Street N, St. Petersburg, FL 33701

Additional Photos 905 Central Ave, Saint Petersburg, FL 33705



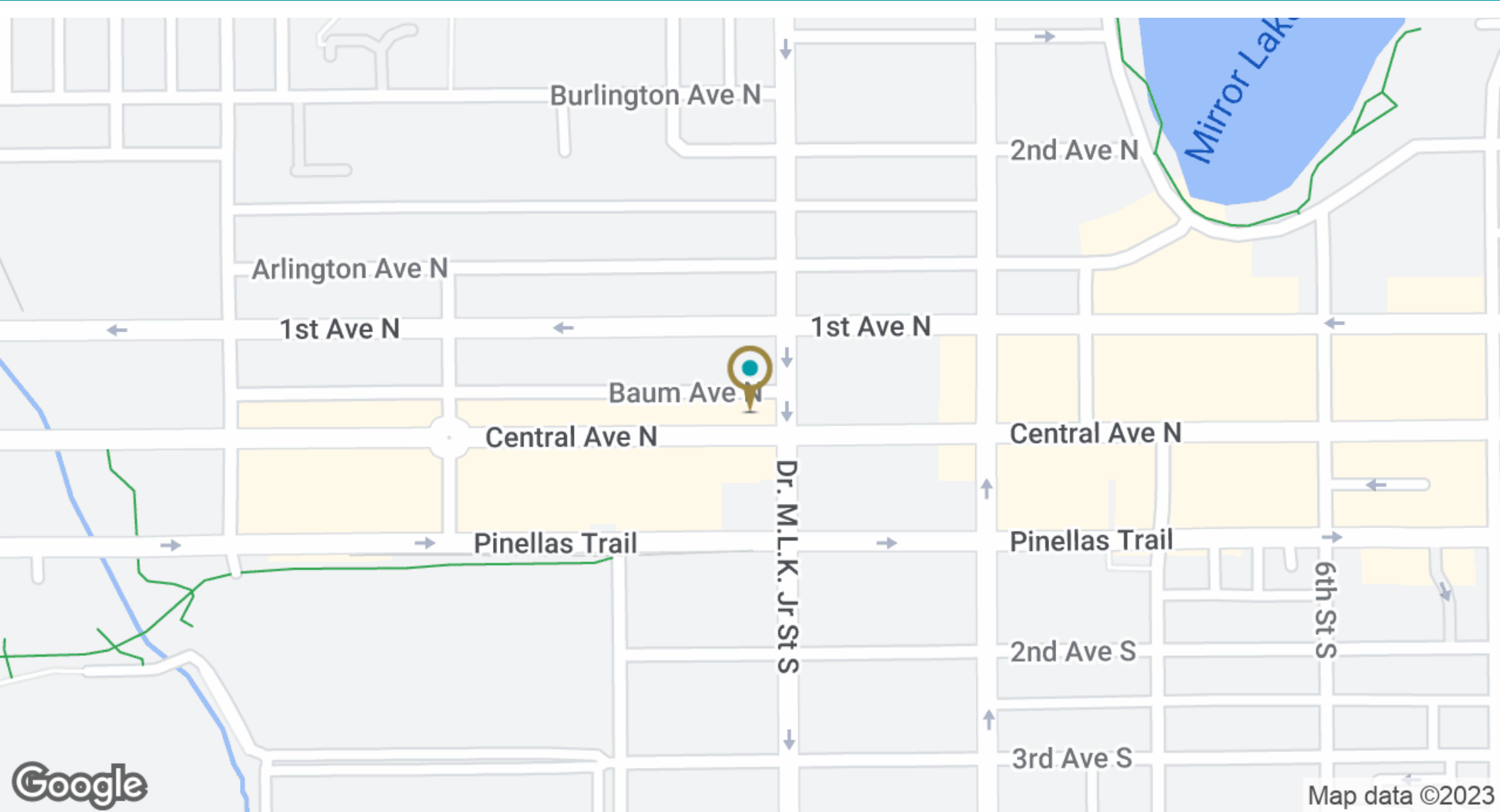
EJ Barkett / 727.388.9500 / ej@barkettrealty.com / barkettrealty.com
John Barkett / 727.388.9500 / john@barkettrealty.com / barkettrealty.com
615 9th Street N, St. Petersburg, FL 33701

Additional Photos *905 Central Ave, Saint Petersburg, FL 33705*



EJ Barkett / 727.388.9500 / ej@barkettrealty.com / barkettrealty.com
John Barkett / 727.388.9500 / john@barkettrealty.com / barkettrealty.com
615 9th Street N, St. Petersburg, FL 33701

Location Maps *905 Central Ave, Saint Petersburg, FL 33705*



EJ Barkett / 727.388.9500 / ej@barkettrealty.com / barkettrealty.com
John Barkett / 727.388.9500 / john@barkettrealty.com / barkettrealty.com
615 9th Street N, St. Petersburg, FL 33701

Demographics Map & Report 905 Central Ave, Saint Petersburg, FL 33705

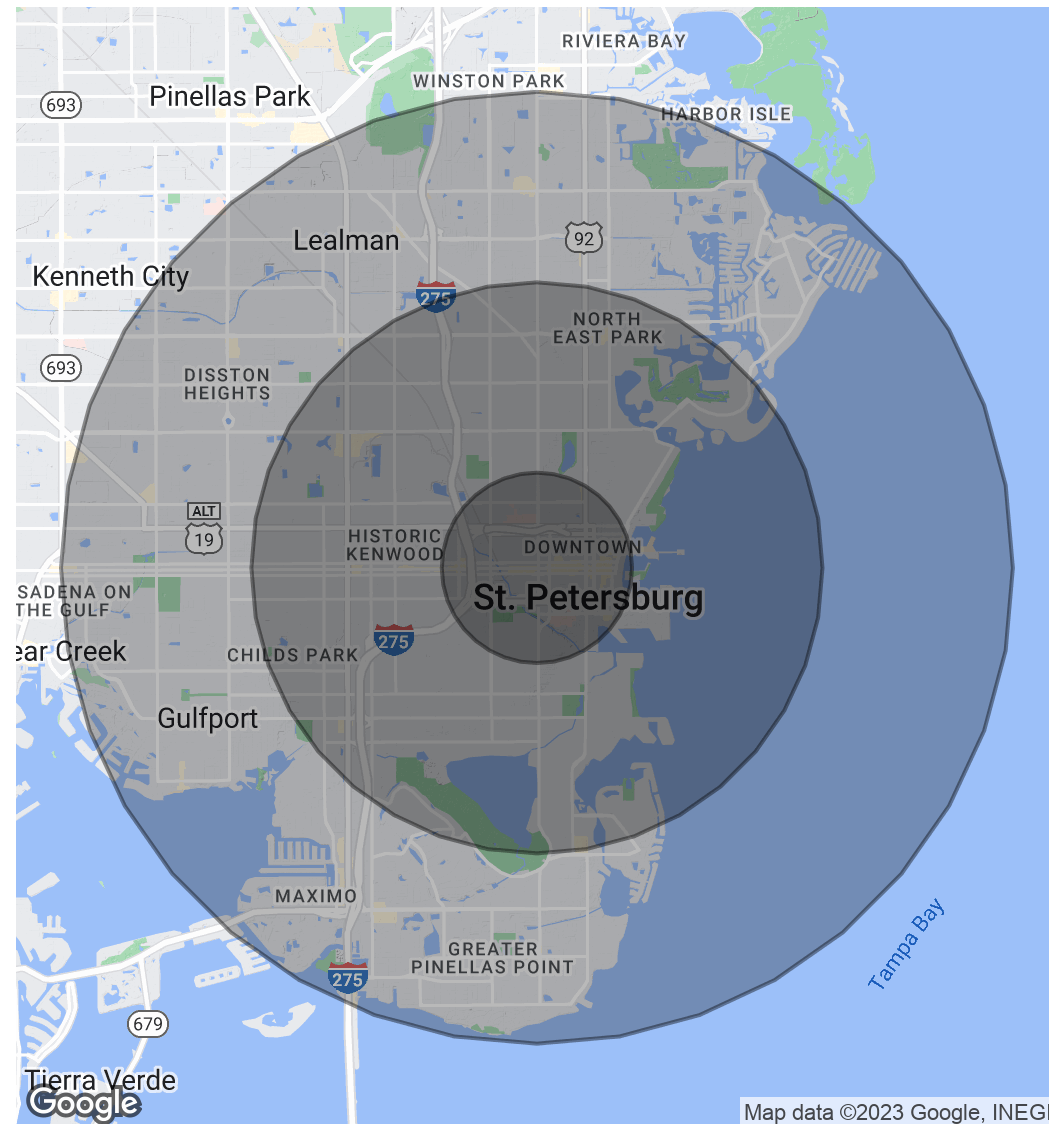
POPULATION

	1 MILE	3 MILES	5 MILES
Total Population	10,905	92,740	228,881
Average age	45.5	40.2	41.0
Average age (Male)	43.6	38.6	39.2
Average age (Female)	46.4	41.0	42.3

HOUSEHOLDS & INCOME

	1 MILE	3 MILES	5 MILES
Total households	5,849	40,416	97,357
# of persons per HH	1.9	2.3	2.4
Average HH income	\$41,845	\$53,403	\$55,179
Average house value	\$240,657	\$227,675	\$213,355

* Demographic data derived from 2020 ACS - US Census



EJ Barkett / 727.388.9500 / ej@barkettrealty.com / barkettrealty.com
John Barkett / 727.388.9500 / john@barkettrealty.com / barkettrealty.com
615 9th Street N, St. Petersburg, FL 33701